



SPORTSFLOORING ROLLS

DATASHEET

www.stockz.eu

CUSTOMER CARE COMES FIRST!

Stockz B.V. is founded in 2017 by two ambitious entrepreneurs. They recognized that too often fitness flooring was seen as an afterthought, which lead to various issues such as:

- Missed opening dates because of untimely deliveries
- quality issues because of incorrect decisions on what product to lay in which area of the health club;
- Budget challenges because of significant overspending due to urgency;

Large European rubber flooring manufacturers were not organized to deliver smaller, steady supplies at the right quality and level service to an industry so specific with it's demands and wishes as the fitness industry.

Stockz differentiates its self by being able to deliver a vast range of high quality rubber floor coverings, directly from stock, at a competitive level! We also pride ourselves in the fact that we contribute significantly to the circular economy; our rubber products consist almost exclusively of recycled car and truck tires.

We stock products such as:

- Sportsflooring by roll
- Fitness tiles
- SBR playground tiles
- Various rubber granulate underlay solutions
- Tile carriers
- Anti-slip mats for load securing
- Foam from recycled mattresses
- Various other technical products made from crumb rubber and/or vulcanized rubber

Stockz holds office and warehouse in the Netherlands

Stockz B.V.
Rondweg 26
8091 XB Wezep

YOU ARE WELCOME TO COME AND SEE US!





TABLE OF CONTENTS

I. THICKNESS & COLOURS PAGE 02

II. SPORTSFLOORING ROLLS PAGE 04

III. INSTALLATION & CLEANING PAGE 06

IV. BENEFITS PAGE 10

01. PURE BLACK PAGE 12

FIVE
CLASSIQ

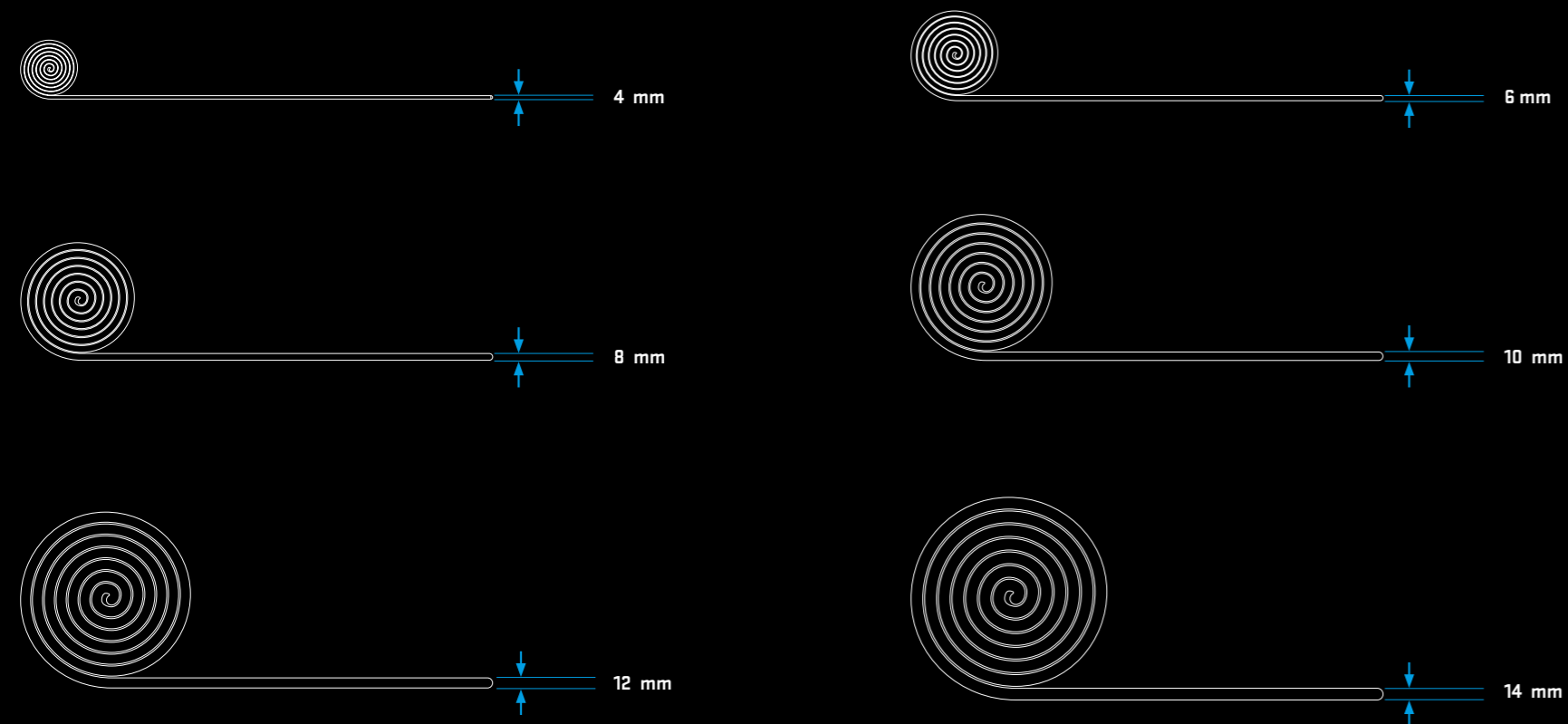
02. PIETRA STONE PAGE 14

03. OUR COLOUR RANGE PAGE 16

I. THICKNESS & COLOURS

Our roll flooring is available in a suitable thickness for every purpose. From as thin as 4 mm all the way up, in 2 mm increments, to 14 mm. Our standard roll width is 1.25 meters.

THICKNESSES



OUR COLOURS

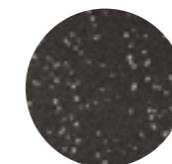
PURE BLACK



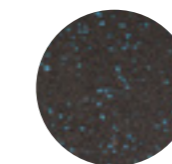
BLACK



FIVE



GREY



BLUE



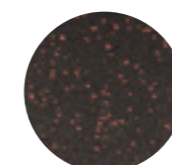
LILA



ORANGE



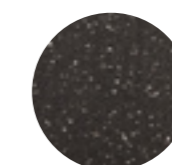
YELLOW



RED

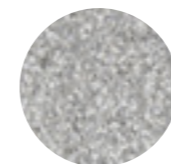


SAMBA



STARS

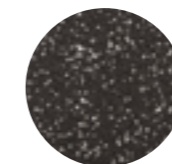
PIETRA STONE



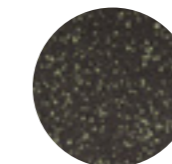
PIETRA STONE



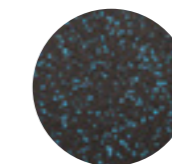
CLASSIQ



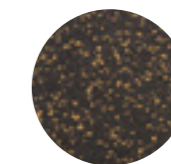
GREY



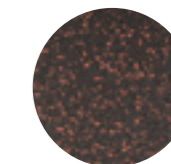
GREEN



BLUE



YELLOW



RED

II. SPORTSFLOORING ROLLS

From 4 mm cardio training, spinning, physiotherapy, yoga, exhibition, as substrate protection etc.

From 6 mm fitness studio, aerobic, shooting range

From 8 mm functional training, Martial Arts

From 10 mm ice rink, mountain / cable car station, ski rental, free weight areas medium weights

From 12 mm free weight areas heavy weight, CrossTraining

The sportsflooring rolls are manufactured from predominantly recycled black rubber crumb from truck tires, the coloured options have a percentage of new EPDM added to the mix. As a result of exclusively using truck tires this flooring has a very fine and smooth surface.

Our highly compact and maximally robust rubber floor covering is immune to moisture and water, rot proof, elastic, insulates against impact sound and is suitable for a wider range of applications:

Exhibitions, trade fairs and booths, fitness centres, crossfit boxes, leisure rooms, sports centres, cloakrooms, ice rinks, mountain stations, firing ranges, horse carriers, etc.spaces of golf courses.



III. INSTALLATION & CLEANING

SUBFLOOR

The surface must be smooth, level (levelled) and clean/dry.

PREPARATION

- When rolling out the rubber rolls, they will curl up at the ends. We therefore recommend leaving the rolls at room temperature for a few hours (ideally 24) before final laying and cutting to allow the surface to acclimatise.
- Underfloor heating must be turned off 24 hours before installation and must only be turned back on after the adhesive has cured.

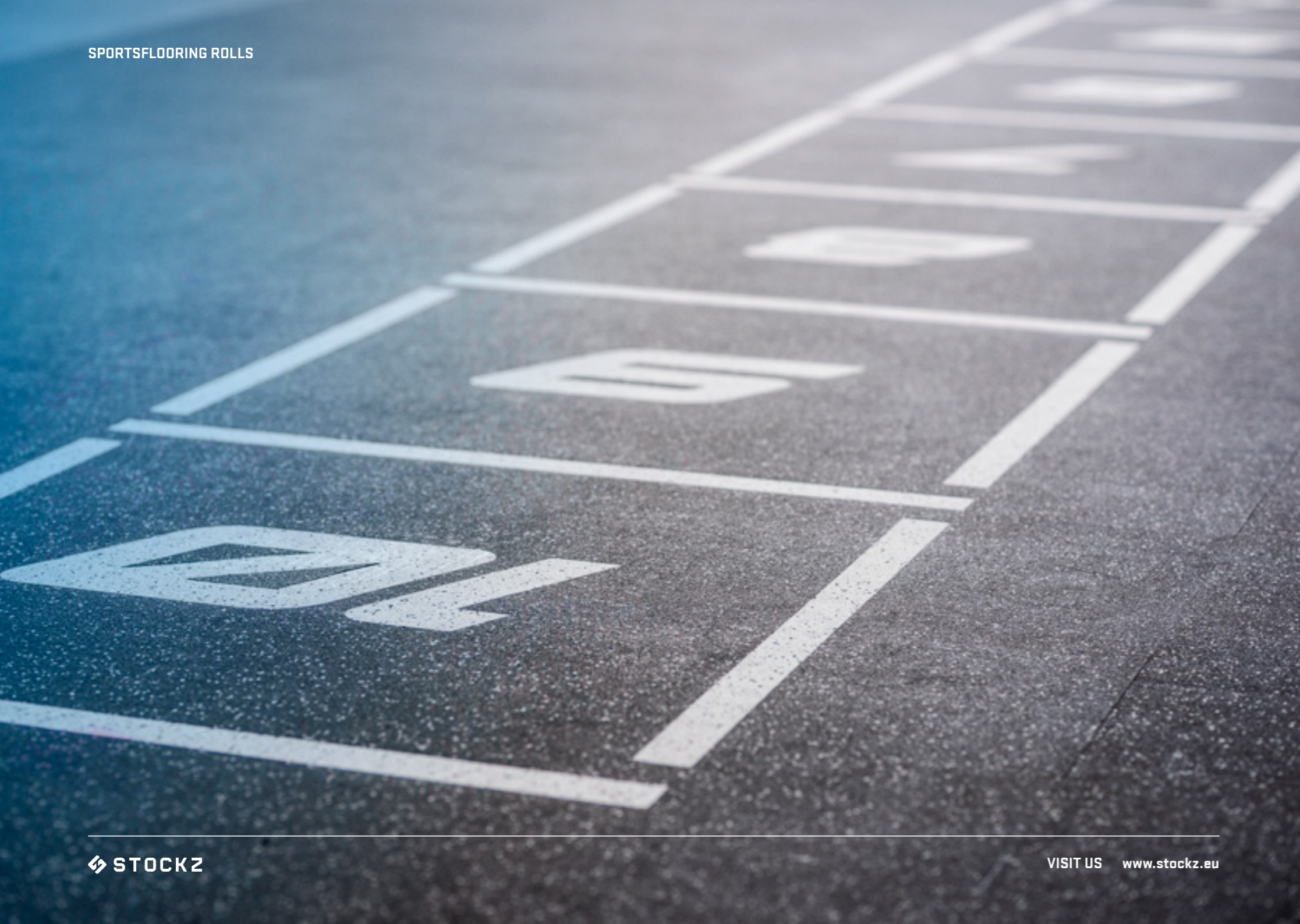
GLUE TO THE SUBFLOOR

For complete surface adhesion and due to characteristic roll tensions, we recommend gluing the rubber to the substrate. In this case, the glue manufacturer's specific adhesive recommendations should be followed.

If you have any doubts about the substrate or areas of application, please contact the relevant adhesive manufacturer directly. Head joints and seams should be fixed where necessary.

If the joints are coming up after glueing the roll down, it is recommended to place some weight on the joint to keep it down until the glue is fully cured.



**CUTTING**

The material can be cut using a sharp knife or a carpet knife.

CLEANING

To prevent excessive dirt on the floor, we recommend installing dirt traps at entrances. Keep the floor free of oil, petrol and acids. The floor is best cleaned with a damp cloth or mop. In addition, regular sweeping or vacuuming is sufficient. Slightly adhering dirt can be removed with a damp cloth. Heavier dirt can be cleaned with a mild detergent or mild soap dissolved in water. Always clean with clean water afterwards.

Stains must be removed as soon as possible because certain substances can react with the surface. After this, these stains are very difficult to remove, or can no longer be removed at all. We always advise to contact a professional party for cleaning the floors. No claims can be accepted when unauthorized cleaning products are used.

REMARKS:

Although highly compressed, it can still absorb slightly porous surface liquids. So, depending on the application, for hygienic reasons and to simplify cleaning, a 2-K PU waterproof sealant or hardwax can be applied to the installed floor covering using a suitable coating roll.

IV. BENEFITS



HIGH DENSITY



EUROPEAN MANUFACTURED



100% RECYCLED RUBBER USED



ODOURLESS

01. PURE BLACK FIVE CLASSIQ

DIMENSION

THICKNESSES	4 mm • 6 mm • 8 mm • 10 mm • 12 mm • 14 mm
ROLL WIDTH	1.250 mm
ROLL LENGTH	As required
TOLERANCES	WIDTH ± 1,5 % • LENGTH ± 1,5 %

MATERIAL PROPERTIES

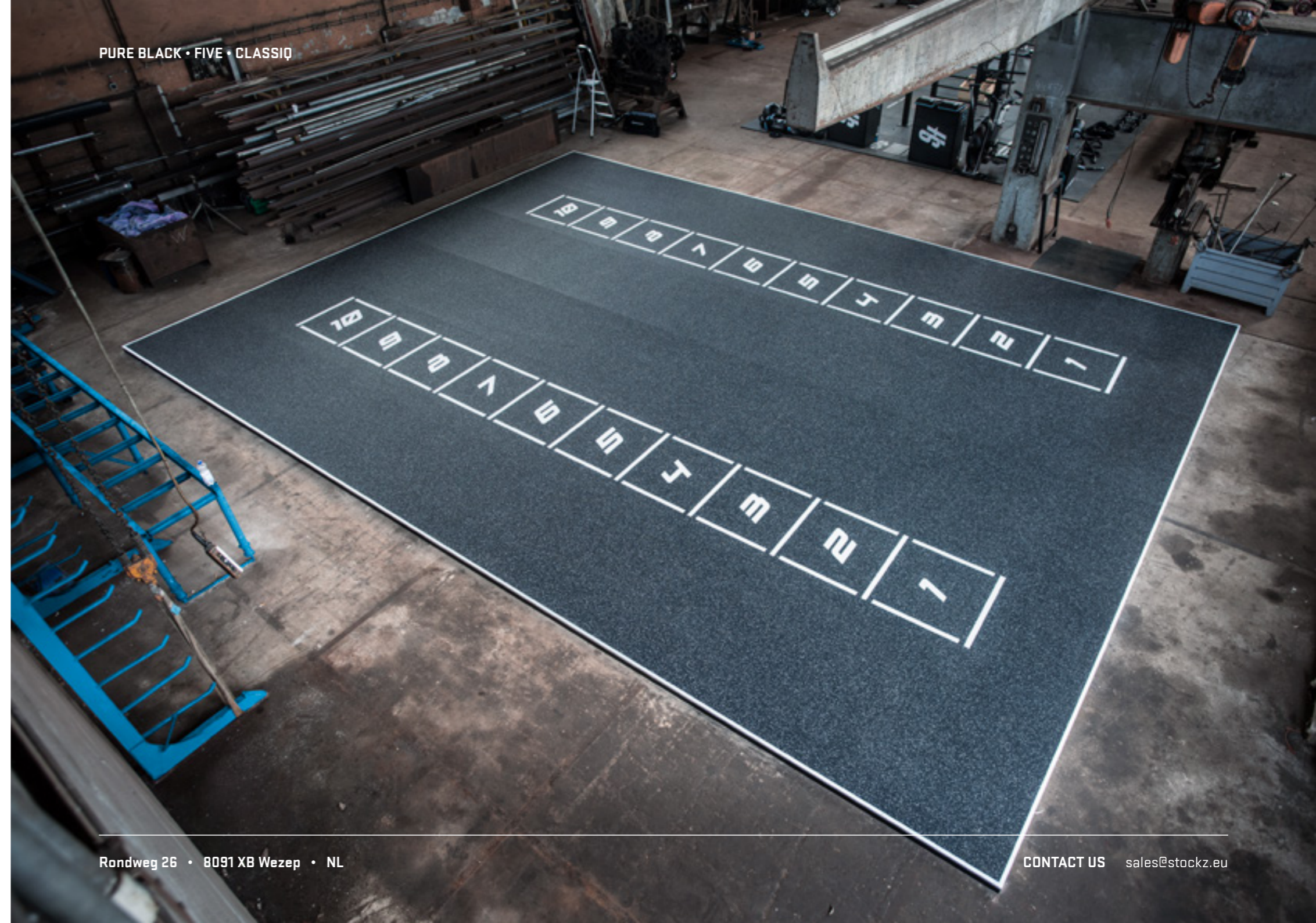
TOUGH ELASTIC • HIGH COMPRESSION RESISTANCE AND IMPACT STRENGTH • SKID AND SPIKE RESISTANT • NON-SLIP HIGH ABRASION RESISTANCE • COMFORTABLE • NOISE INSULATING.

COMPOSITION

PURE BLACK	SBR rubber granules bonded with PUR
CLASSIQ	SBR and EPDM rubber granules bonded with PUR
FIVE	SBR and EPDM rubber granules bonded with PUR

SPECIFICATIONS

BULK DENSITY	Approx. 980 kg/m ³				
ULTIMATE TENSILE STRENGTH	PURE BLACK	> 1.8 N/mm ² Elongation at break: 98 %	EN 12230		
	FIVE / CLASSIQ	> 1.8 N/mm ² Elongation at break: 118 %	EN 12230		
COMPRESSION	10 mm	9% DVR with a compression of 25%	EN 12230		
MAX. COMPRESSION	AT 5N/mm ² 12mm:	2.32 mm without visible damage	EMPA		
SHOCK ABSORPTION	6 mm: 15,7 %	8 mm: 17,4 %	10 mm: 18,5 %	12 mm: 21,0 %	EN 14904
TEMPERATURE STABILITY	30° C to +80° C (in resting condition -120° C and for short periods up to +300° C)				
DIMENSIONAL CHANGE AFTER HEAT EXPOSURE					
PURE BLACK	Longitudinal 0.15%	Across 0.0 %	Warping 0 mm	EN 434	
CLASSIQ	Longitudinal 0.25%	Across 0.0 %	Warping 0 mm	EN 434	
THERMAL CONDUCTIVITY	0.17 W/(mK)		EN 12230		
FIRE BEHAVIOUR	E _{fl} – S2		EN 13501		
SOUND IMPROVEMENT	6 mm: 17 dB	8 mm: 18 dB	EN ISO 10140		
ANTI-SLIP PROPERTY	Class R 10		DIN 51130		
	Class DS		EN 14041		
DYNAMIC COEFFICIENT OF FRICTION	μ 0.57		EN 13893		
ELECTRICAL PROPERTIES	-0.7 kV (antistatic)		EN 1815		
STATIC STIFFNESS	at a maximum load of 8 kN (evaluation)*				
DYNAMIC STIFFNESS	at average loads from 0.4 to 4 kN and frequencies from 5 to 40 Hz (evaluation)*				
VAPOUR DIFFUSION	Vapour permeable				
CHEMICAL BEHAVIOUR	Resistant to water, numerous diluted acids and alkaline solutions		EN 423		
	*charts available upon request				
	CHICALLY NEUTRAL • UV-RESISTANT				



02. PIETRA STONE

DIMENSION

THICKNESSES	4 mm • 6 mm • 8 mm • 10 mm • 12 mm • 14 mm
ROLL WIDTH	1.250 mm
ROLL LENGTH	As required
TOLERANCES	WIDTH ± 1,5 % • LENGTH ± 1,5 %

MATERIAL PROPERTIES

TOUGH ELASTIC • HIGH COMPRESSION RESISTANCE AND IMPACT STRENGTH • SKID AND SPIKE

RESISTANT • NON-SLIP HIGH ABRASION RESISTANCE • COMFORTABLE • NOISE INSULATING.

COMPOSITION

PIETRA STONE Recycled EPDM caoutchouc granules bonded with PUR

SPECIFICATIONS

BULK DENSITY	Approx. 1.200 kg/m ³				
ULTIMATE TENSILE STRENGTH	PIETRA STONE	> 1.8 N/mm ² Elongation at break: 98 %	EN 12230		
COMPRESSION	10 mm	9% OVR with a compression of 25%	EN 12230		
MAX. COMPRESSION	AT 5N/mm ² 12mm:	2.32 mm without visible damage	EMPA		
SHOCK ABSORPTION	6 mm: 15,7 %	8 mm: 17,4 %	10 mm: 18,5 %	12 mm: 21,0 %	EN 14904
TEMPERATURE STABILITY	30° C to +80° C (in resting condition -120° C and for short periods up to +300° C)				
DIMENSIONAL CHANGE AFTER HEAT EXPOSURE					
PIETRA STONE	Longitudinal 0.25%	Across 0.0 %	Warping 0 mm	EN 434	
THERMAL CONDUCTIVITY	0.16 W/(mK)		EN 12667		
FIRE BEHAVIOUR	D _{fl} - S2		EN 13501-1		
SOUND IMPROVEMENT	6 mm: 17 dB	8 mm: 18 dB	EN ISO 10140		
ANTI-SLIP PROPERTY	Class R 10		DIN 51130		
	Class DS		EN 14041		
DYNAMIC COEFFICIENT OF FRICTION	μ 0.57		EN 13893		
ELECTRICAL PROPERTIES	-0.7 kV (antistatic)		EN 1815		
STATIC STIFFNESS	at a maximum load of 8 kN (evaluation)*				
DYNAMIC STIFFNESS	at average loads from 0.4 to 4 kN and frequencies from 5 to 40 Hz (evaluation)*				
VAPOUR DIFFUSION	Vapour permeable				
CHEMICAL BEHAVIOUR	Resistant to water, numerous diluted acids and alkaline solutions		EN 423		

*charts available upon request

CHICALLY NEUTRAL • UV-RESISTANT

PIETRA STONE

03. OUR COLOUR RANGE

PURE BLACK

SBR rubber granules bonded with PUR

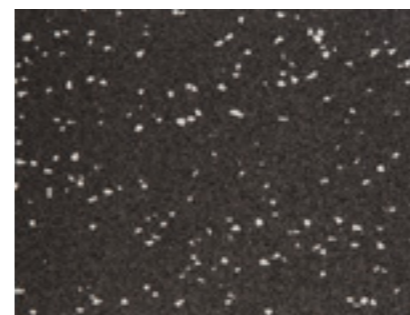
BLACK



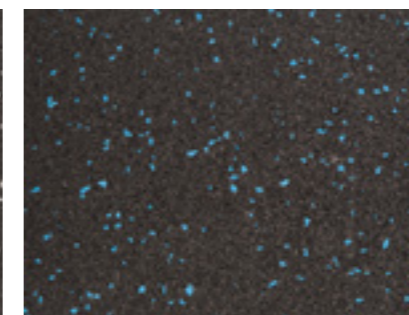
FIVE

95% SBR and 5 % EPDM rubber granules bonded with PUR

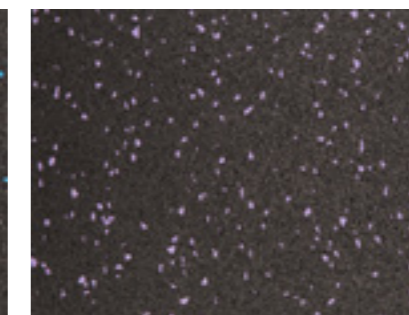
GREY



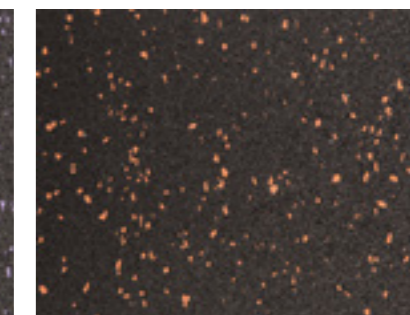
BLUE



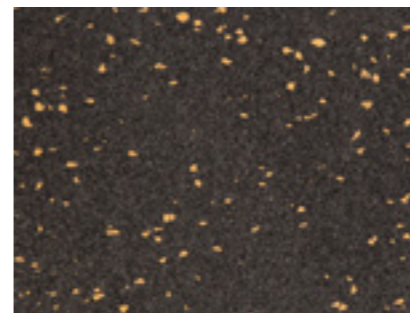
LILA



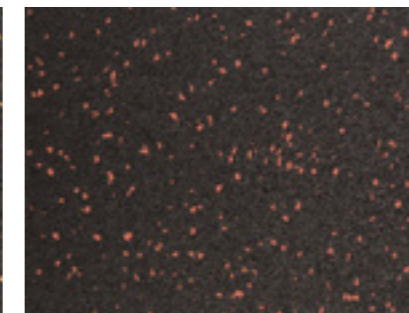
ORANGE



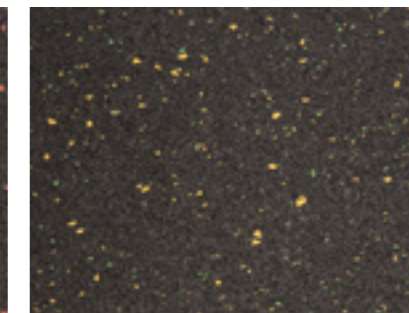
YELLOW



RED



SAMBA



STARS

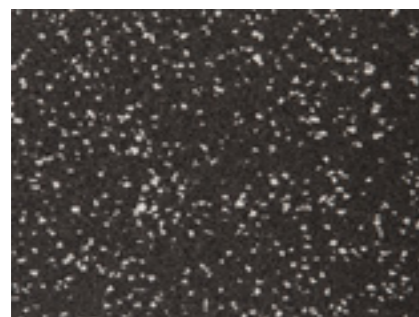


02. OUR COLOUR RANGE

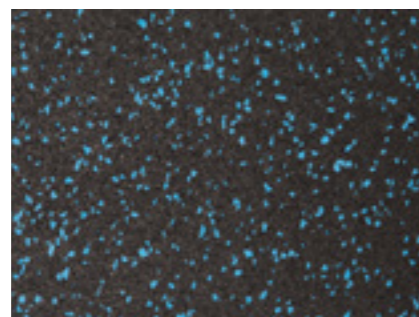
CLASSIQ

80% SBR and 20 % EPDM rubber granules bonded with PUR

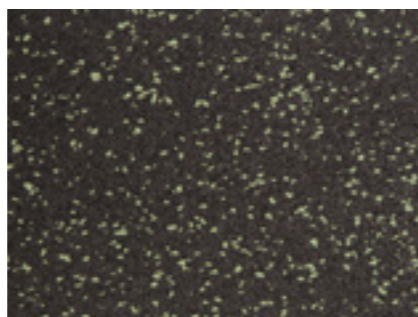
GREY



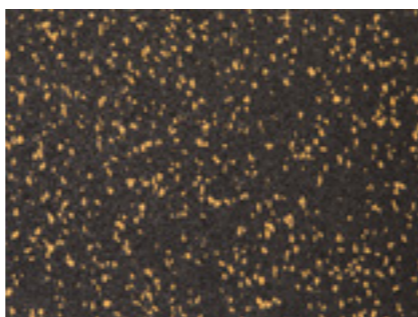
BLUE



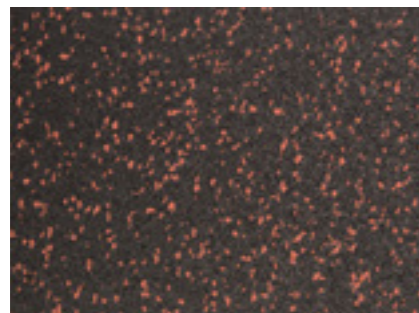
GREEN



YELLOW



RED



PIETRA STONE

SBR rubber granules bonded with PUR

DIFFERENT SHADES OF GREY







THANK YOU